

Helping Make
Products Better™

 **BASF**
The Chemical Company

BASF

Emergency Response Issues in Foreign Markets

**Tom McGourty, Manager NAFTA
Emergency Response**

BASF - Multinational Company

- BASF AG divides world into four regions for off-site Emergency Response coverage

Asia

North America

Europe

South America

- Inter-region coordination organized through BASF AG Fire Department

Helping Make
Products Better™

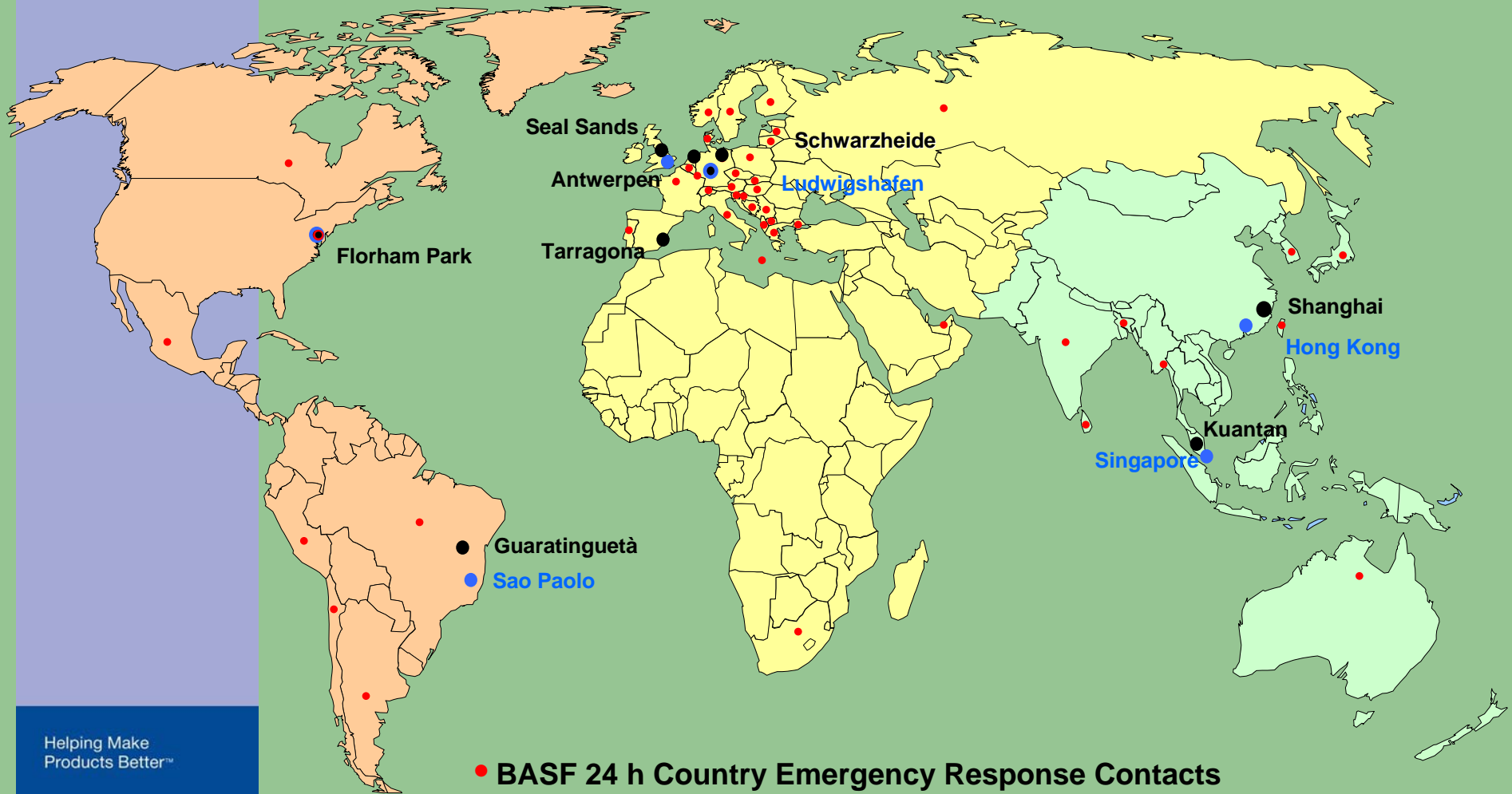
 **BASF**

The Chemical Company

Competence Center Responsible Care[®]

Emergency Response

BASF's Global Emergency Response Network



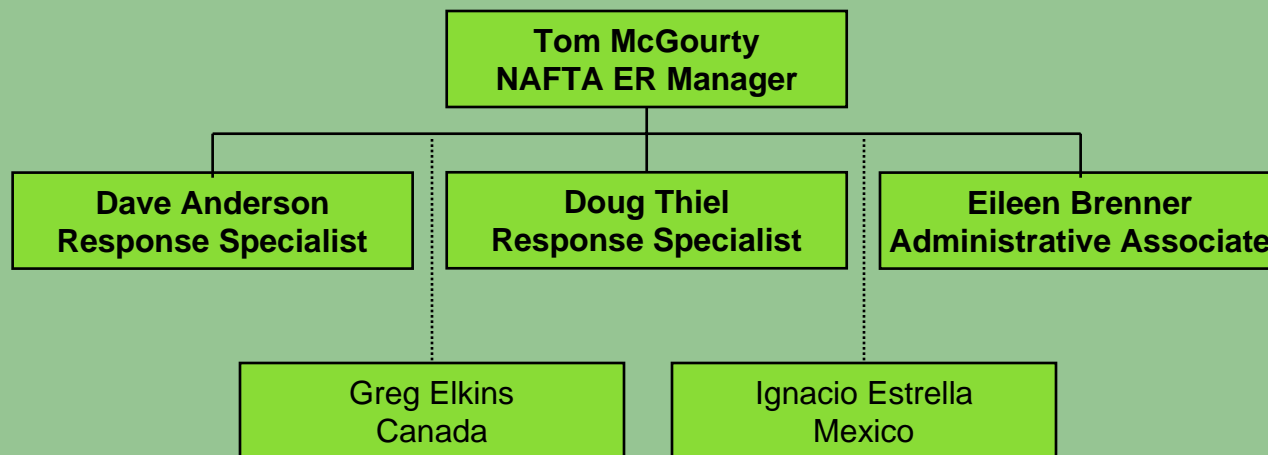
- BASF 24 h Country Emergency Response Contacts
- BASF Emergency Control Centers
- BASF Regional Crisis Management Teams

Helping Make
Products Better™



EMERGENCY RESPONSE

- BASF Corporate Emergency Response Team coordinates North America activities



Helping Make
Products Better™

 **BASF**
The Chemical Company

EMERGENCY RESPONSE

- BASF North America includes Canada, US, Mexico, Caribbean, and Central American countries down to Panama Canal.

Helping Make
Products Better™

 **BASF**

The Chemical Company



From the Bering Strait...

to the Panama Canal.

Helping Make
Products Better™

 **BASF**

The Chemical Company

EMERGENCY RESPONSE

- BASF philosophy regarding spills
 - A chemical compound is a chemical compound, regardless of where it is located in the world
 - If a spill occurs, goal is to have our reaction be the same response, same cleanup

Helping Make
Products Better™

 **BASF**
The Chemical Company

TRACER Team

“Technical Resource and Chemical Emergency Response Team”

- Off-site response organization for BASF North America
- ~ 110 members in three countries, eight regional teams
- Volunteers, by invitation only
- “Best of the best” within BASF
- Annual training organized by central staff
- Local Fire/HAZMAT members invited as our guest

Helping Make
Products Better™

 **BASF**
The Chemical Company

Considerations with Out-Of-Country response

- Work Visas are necessary
- Emergency work-visas can take days - response is often needed quicker
- Limited as to what tools you can take without running into customs issues

Helping Make
Products Better™

 **BASF**

The Chemical Company

Considerations with out of country response, cont.

- Difficult to find qualified ER contractor in many areas
- Many people would like to help, many are not even remotely qualified
- Language issues

Helping Make
Products Better™

 **BASF**

The Chemical Company

Steps you can take to get prepared.

- Know what company products are sold where. Enterprise systems can help with this activity.
- Inventory contact information for intra-company people, even sales, within these countries for on-scene 'eyes'.

Helping Make
Products Better™

 **BASF**
The Chemical Company

Steps you can take to get prepared, cont.

- Retainers for some contractors are necessary.
- Pre-plan for offsite response – company assets available?
- Understand how many responders have valid passports - plan to obtain an appropriate number.

Helping Make
Products Better™

 **BASF**

The Chemical Company

Actual response examples

- Kingston, Jamaica 2004 – BASF Germany requests ER response by North America region - TRACER response
- Busan, Korea 2004 – BASF Canada requests response for plasticizer leak in Asian region – BASF Korea HAZMAT personnel response
- Suape, Brazil 2005. U.S. TDI business group requests ER response from South America – Brazil HAZMAT response
- Rotterdam, Holland 2005. Cylinders of inorganic Li based material venting, technical information only.

Helping Make
Products Better™

 **BASF**
The Chemical Company

Port Kingston - Jamaica

- April 15, 2004
- BASF AG shipment of 5 methyl acrylate IM containers
- Destined for Peru, ship calling port in Kingston, Jamaica
- Captain radio-texted problem to BASF AG fire department
- TRACER Team dispatched from Texas team

Helping Make
Products Better™

 **BASF**
The Chemical Company

Port Kingston - Jamaica

- 10 hour port window given, 2 days notice
- Emergency work visa takes three days to be processed
- Team cleared customs, no problem, even with hand tools
- Search for local hazmat capability turned up empty

Helping Make
Products Better™

 **BASF**

The Chemical Company

Port Kingston - Jamaica

- TRACER Team given free access to ship surface, once credentialed
- Shown problem area, left alone
- Manways on all five containers were found to have loose wing nuts, 3 / 4 turn to close.
- Ship was 18 hours early!

Helping Make
Products Better™

 **BASF**
The Chemical Company

Helping Make
Products Better™

 **BASF**

The Chemical Company

Questions?